

# SMART SOLUTIONS



## MC-24X

### Combining high speed and a wide component range

Compact, versatile modular moulder combining best in class feeding positions, board size and component range

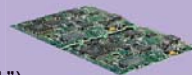
**54,000 cph**

maximum output



**700 x 460mm**

max. board size L x W (27.5" x 18.11")



**01005 → 45 x 45mm**

component size



**100 x 45mm**

max. connector size (with optional line array camera)



**↑ 15mm**

max. component height



**Tape cutting included!**

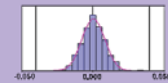
**96**

intelligent feeder positions



**30 micron**

accuracy at 3 sigma for QFP



**100% inspection**

for BGA balls. Standard side-lighting available.



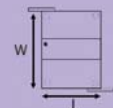
**30 tray positions**

with automatic tray sequencer



**1,254 x 1,687mm**

footprint L x W



### Increased modularity

- Example 1: **MC-24 + MC-24X with automatic tray stacker ATS**
  - **182 feeder positions** in combination with tray feeding and up to 700 x 460mm (**27.56 x 18.11 inch**), outputs up to **126,000 cph**
- Example 2: **MC-24 + MC-24X + MC-24X with automatic tray stacker ATS**
  - **278 feeder positions** combination with tray feeding and board sizes up to 700 x 460mm (**27.56 x 18.11 inch**), outputs up to **180,000 cph**

MC-24 MC-24X ATS



MC-24 MC-24X MC-24X ATS



## Options:

- Coplanarity checker
- Part feeder indicator lamp



- Intelligent setup verification
- LCD touch screens

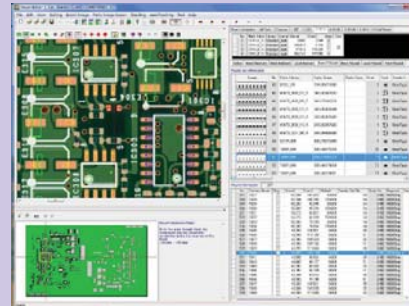


- Feeder exchange system



## Software:

- “Easy to use Assembléon Manufacturing Suite (AMS) factory integration software to optimize machine and line performance, including virtual sticky tape and offline vision tool”.



	MC-24X	MC-24X ATS
Optimal output per hour:	54,000 cph	54,000 cph
IPC 9850 output per hour:	46,000 cph	46,000 cph
Placement accuracy CpK > 1:	50 micron for chips 30 micron for QFP	50 micron for chips 30 micron for QFP
Min. component size (LxW):	0.4 x 0.2mm (01005)	0.4 x 0.2mm (01005)
Max. component size (LxW):	100 x 45mm	100 x 45mm
Max. component height:	15mm	15mm
Standard max. board size (LxW):	420 x 460mm (16.54" x 18.11")	420 x 460mm (16.54" x 18.11")
Optional max. board size (LxW):	700 x 460mm (27.56" x 18.11")	700 x 460mm (27.56" x 18.11")
Board thickness:	0.4 to 4mm	0.4 to 4mm
Automatic toolbit exchange:	Nozzles	Nozzles
Max. tape feeding positions (8mm):	96	62
Max. tray pallets	n/a	30
Feeding options:	Tape, stick, re-use, waffle pack	Tape, stick, tray, re-use, waffle pack
Min. footprint (LxW) (excl. feeders):	1,254 x 1,687mm	1,254 x 2,018mm



© Assembléon 2010. All rights are reserved. Reproduction in whole or in part is prohibited without the prior written consent of the copyright owner. The information presented in this document does not form part of any quotation or contract, is believed to be accurate and reliable and maybe changed without notice. No liability will be accepted by the publisher for any consequence of its use. Publication thereof does not convey nor imply any license under patent or other industrial or intellectual property rights. Date of release: June 2010. 9498 392 0103.1

### ASIA-PACIFIC

Assembléon Hong Kong Ltd.  
T: +852 2167 1000

### EUROPE

Assembléon Netherlands B.V.  
T: +31 40 272 3000

### THE AMERICAS

Assembléon America Inc.  
T: +1 770 751 4420

assembleon.com

**PHILIPS**

**Assembléon**